



Universal Data Manager V4.1

Release Announcement



UDM V4.1 | Release Announcement

Dino Software Corporation is pleased to announce the release of Universal Data Manager (UDM) Version 4 Release 1.

UDM's GUI interface provides a consolidated global view of the enterprise z/OS storage environment. With the ease of a few mouse clicks, users can do the following:

- **Automate** z/OS object management by reacting to console messages or conditions dynamically, and by scheduling processes to report on the status of an object.
- **Monitor** the status of z/OS objects via a single, consolidated GUI window, enabling users to view and react to alerts from all z/OS systems simultaneously.
- **Report** on all aspects of enterprise z/OS storage subsystems centrally, in real time or from history files, using SQL filters. Using a single request, for example, users can view the status of storage groups on all z/OS systems in a central window.
- **Maintain** z/OS systems using the Command or JCL interfaces that enable users to centrally define, store, and run z/OS commands or JCL decks.
- **Simplify** z/OS maintenance tasks using Explorers, wizards, and object management facilities.

Simplified installation, guided customization, and pre-configured processes make it possible to install and gain the benefits from using UDM in minutes rather than the days required by other products on the market.

Enhancements

Catalog Management

Catalog management is further enhanced with integration and direct utilization of T-REX 8.1 data via enabling the newly established UDMXFER parameter.

- **Catalog Reporting** - New T-REX fields in the ICF Catalogs report support data supplied from T-REX 8.1 EXPORT and EXAMINE functions, including the time that catalogs were last backed up, the status of the backups, and the integrity status of the catalogs' data and index portions.
- **Catalog Reorg/Move Wizard (beta)** - A setup assistant guides you step-by-step through the process of reorganizing catalogs with simplified control card generation and integrity checks to ensure that critical prerequisites and other issues are addressed prior to running the process. The wizard enables you to do the following:
 - Reorganize catalogs in place without redefining them.
 - Move, resize, or change catalog attributes.
 - Create profiles for repeated, consistent reorg/move jobs.
- **Catalog Backup Automation**

New schedule:

- **ICF Catalogs** - Back up catalogs using the T-REX EXPORT function

This new schedule backs up all connected catalogs and provides to the UDM ICF Catalogs report information such as the time that the backup was taken, where it resides, and whether it completed successfully.

- **Catalog Integrity Check Automation**

New schedule:

- ICF Catalogs - Examine catalogs' data portions using the T-REX EXAMINE function
- ICF Catalogs - Examine catalogs' index portions using the T-REX EXAMINE function

These new schedules examine the data and index portions of all connected catalogs and provides to the UDM ICF Catalogs report information about their status.

Automation

- **Email Automation Output** - The Email Results feature is now available for non report-based functions. This enables users to set up automation to submit commands or JCL and then email the output produced.

Additionally, users can attach to the schedule all output associated with a schedule run, including debugging information for schedules that end in error, as a .txt file.

Reporting

APF/Link Report - the APF/Linklist report has been refactored to prevent false error reporting.

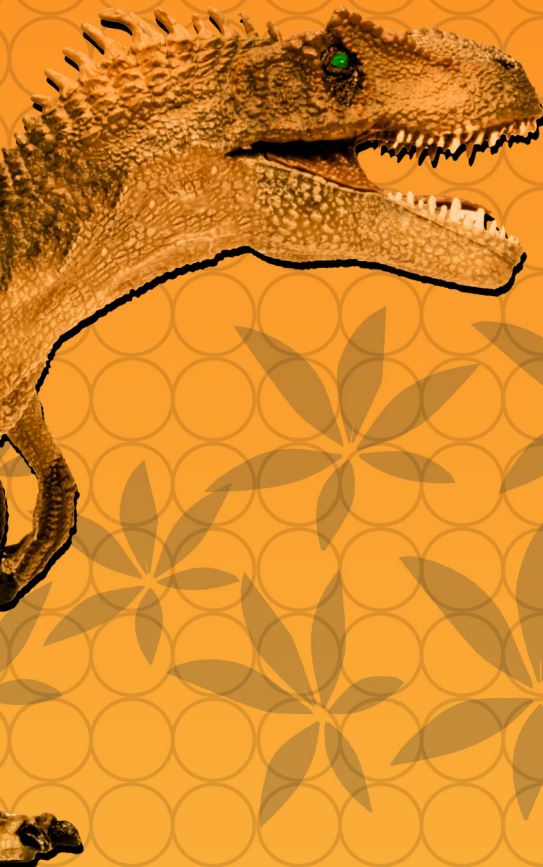
General

- **IBM z/OS 3.1 operating system support.**
- **Graph feature supports zooming in and out of graphs dynamically** – When displaying a graph, using the Reset function or double-clicking in the graph enables users to zoom in to the graph for a more detailed view.
- **Host/Server clean-up** - Several improvements have been implemented to further reduce the resource footprint when running UDM servers.
- **GUI clean-up** - Several improvements have been made to Copy, Email, Filter, Graph, and Summarize functions to ensure that processing large amounts of data is stable and reliable.
- **Signon/Server Status** – The signon server status process has been refactored to support Multi- Factor Authentication and simplify enterprise signon. Whenever a system selection window is displayed,

users can now double-click a system entry and sign on directly to that system without having to first launch the Server Status window.

- **Volume Initialization Wizard** – The wizard has been refactored to support dynamic processing. Now users can start the wizard and initialize volumes directly using a step-by-step, guided process without the need for a previously defined profile.
- **zIIP Processing Support** – The new ENABLE_ZIIP parameter supports zIIP processing. UDM uses zIIP processors whenever the zIIP functionality is available and deemed beneficial.

Dino-Software develops enterprise-wide solutions for the management, analysis, protection, and repair of complex z/OS mainframe environments. Dino-Software has long been acknowledged for its superiority in ICF catalog management and technical support, helping organizations ensure that their business-critical assets remain online and recoverable in a disaster. Learn about Dino-Software's mainframe storage solutions at dino-software.com.



Alte Landstr 25
85521 Ottobrunn
+49 - 89 - 99 14 99 0
<http://www.interchip.de>